

# REL – 2.75 Te WLL - 3500m - Electric Winch



## TECHNICAL SPECIFICATION

Weight without cable (Kg)	Cable diameter (mm)	Capacity (m)	Line speed (m/min)		WLL (Kg)		Brake (Kg) Minimum 1.5 WLL	
			First Layer	Top Layer	First Layer	Top Layer	First Layer	Top Layer
4032	14	3500	54	100	2760	1500	4140	2250
Supply Required		380-440V-3 Ph- 50/60 Hz			Cable Lead-off Angle		+/-15° Horizontal plane Min + 0° Max + 45° Vertical plane	
Winch Electrical Motor Level Wind Electrical Motor		30 Kw IP56 IE3 1.5 Kw IP56 IE3			Frame details		Crash frame with guards, fork lifting pockets and certified lifting lugs	
Local Proportional Control		Bi-directionally proportional joystick and speed control potentiometer			Winch drum dimensions		Drum core Ø 508 mm, Drum Length 1260 mm, Flange Ø 1050 mm	
Level wind		Electrically automatic pulse driven level wind with manual adjustment			Drum details		Plain drum; the wire is stored in 17 lays with 90 turns per lay	
Dimensions (LxWxH) Footprint		2570 x 2020 x 1811 mm 2570 x 2020 mm			Cable		Dyneema 14 strand D-Tract	
Slip ring		Designed to accept Focal 180 or similar not within scope of supply			Monitoring		Cable line In / Out via HMI	

### Principle of Operation:

The winch drum is mounted on the output shaft of a 30 kW SEW electric gearmotor fitted with a failsafe brake unit and is connected to the corresponding drive inverter in the control panel. The speed of the drum is proportionally controlled via a potentiometer; its direction is determined by a 3 position, spring return to centre, joystick. These are both mounted locally on the Electric Winch Enclosure.

The brake, being failsafe, always defaults to on should, for any reason, electrical supply is lost or the control joystick is in its centre position. The non-drive side housings a bearing and a slipring.

The Level wind electrically driven from the 1.5 kW SEW Electric gearmotor. The level wind is PLC controlled, is automatic with a manual override. The Level wind can be adjusted to accept a variety of cable diameters if required.

### The winch is supplied with the following:

- 1 Set - sacrificial steel feet/mounting plates for mounting at ship
- Marine grade paint system (Details can be supplied on application)
- 1 Set - Master Links and Shackles or a 4 leg lifting sling and shackles
- 12 Month Warranty
- Canvas Cover for transport and storage
- Operation and Maintenance Manual in Electronic Format

**Optional extras:** - please note these are not in the scope of supply but can be offered at extra cost.

- 1 Off – Slip Ring details to be supplied with order
- 1 Off – Extended Warranty
- 1 Off – Winch running flashing lights and/or Klaxon
- 1 Off – Full Spares Kit
- 1 Off – Spare Programmed SD Card for level wind control.
- 1 Off – Laptop c/w software and leads for on-site fault diagnosis.
- 1 Set – Spare sacrificial feet/mounting plates
- Remote Control wired or wireless

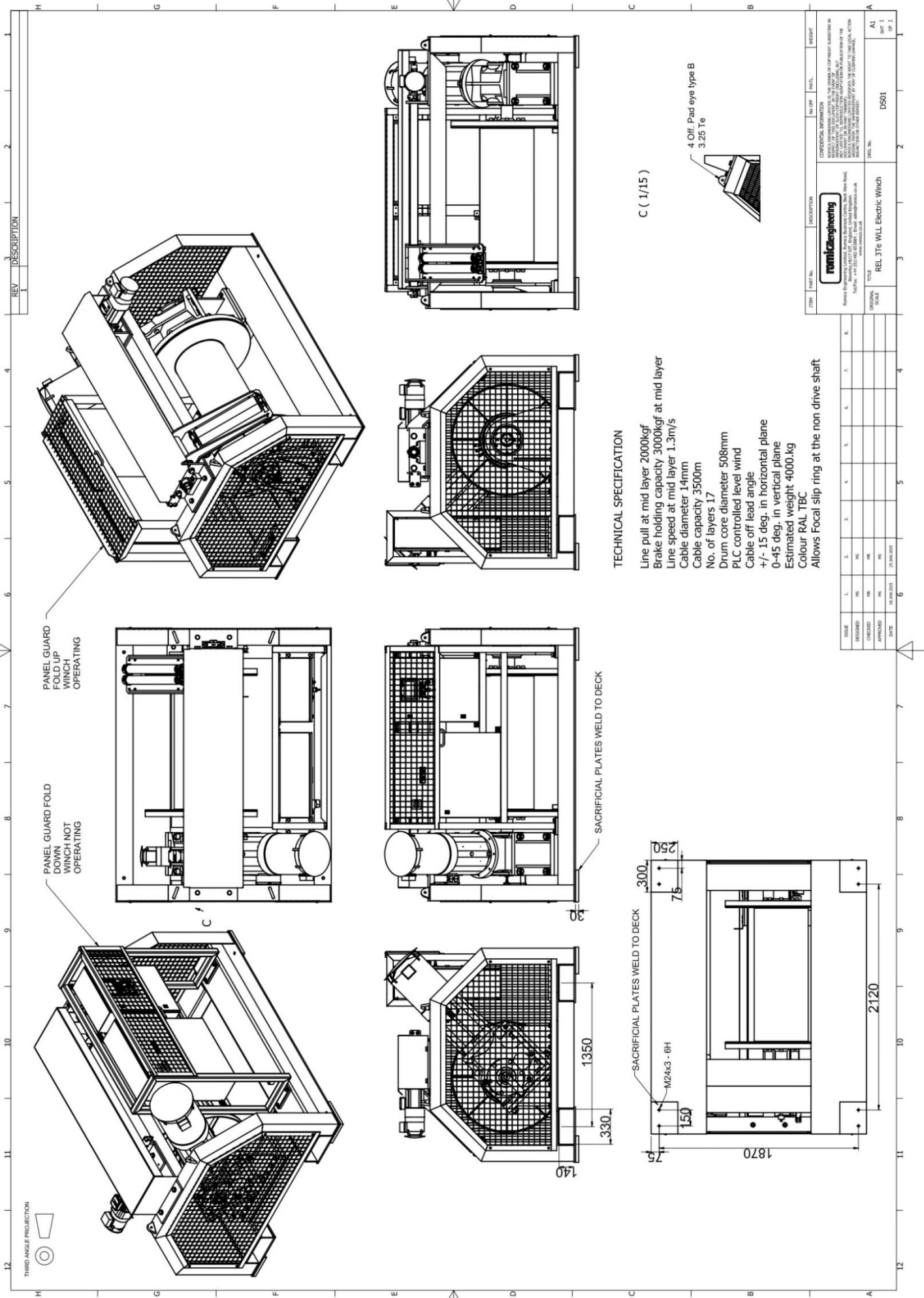


**Romica Engineering Ltd (UK)**

Romica Business Centre,  
Beck View Road, Grovehill Road  
Beverley, HU17 0JT, United Kingdom  
P: (+44) 148 285 3884  
F: (+44) 148 285 3884  
www: <http://romica.co.uk/>

© 2019 The data contained in this document is business sensitive proprietary data owned by Romica Engineering Ltd. This document and the data contained herein may not be disclosed to any third party without the express written permission of Romica Engineering Ltd.





REV	DESCRIPTION
1	

**TECHNICAL SPECIFICATION**

- Line pull at mid layer 2000kgf
- Brake holding capacity 3000kgf at mid layer
- Line speed at mid layer 1.3m/s
- Cable diameter 14mm
- Cable capacity 3500m
- No. of layers 17
- Drum core diameter 508mm
- PLC controlled level wind
- Cable off lead angle +/- 15 deg. in horizontal plane
- 0-45 deg. in vertical plane
- Estimated weight 4000.kg
- Colour RAL TBC
- Allows Focal slip ring at the non drive shaft

C ( 1/15 )

4 Off: Pad eye type B  
3.25 Te



NO	DATE	BY	CHKD	APPD
1	15.03.2023			
2				
3				
4				
5				
6				
7				
8				

ITEM	PART NO.	DESCRIPTION	NO OF Pcs	MATL.	WEIGHT
<b>CONFIDENTIAL INFORMATION</b>					
<small>NOTICE OF THIS PROPERTY IS THE PROPERTY OF COMPANY ISSUING THIS DRAWING. IT IS TO BE KEPT IN STRICTLY CONFIDENTIAL AND NOT TO BE REPRODUCED OR TRANSMITTED IN ANY FORM OR BY ANY MEANS, ELECTRONIC OR MECHANICAL, INCLUDING PHOTOCOPYING, RECORDING, OR BY ANY INFORMATION STORAGE AND RETRIEVAL SYSTEM, WITHOUT THE WRITTEN PERMISSION OF THE COMPANY. THIS DRAWING IS THE PROPERTY OF THE COMPANY AND IS TO BE KEPT IN STRICTLY CONFIDENTIAL AND NOT TO BE REPRODUCED OR TRANSMITTED IN ANY FORM OR BY ANY MEANS, ELECTRONIC OR MECHANICAL, INCLUDING PHOTOCOPYING, RECORDING, OR BY ANY INFORMATION STORAGE AND RETRIEVAL SYSTEM, WITHOUT THE WRITTEN PERMISSION OF THE COMPANY.</small>					
<b>nominiZengineering</b>					
<small>nominiZengineering (Pty) Ltd, Republic of South Africa          100, 101, 102, 103, 104, 105, 106, 107, 108, 109, 110, 111, 112, 113, 114, 115, 116, 117, 118, 119, 120, 121, 122, 123, 124, 125, 126, 127, 128, 129, 130, 131, 132, 133, 134, 135, 136, 137, 138, 139, 140, 141, 142, 143, 144, 145, 146, 147, 148, 149, 150, 151, 152, 153, 154, 155, 156, 157, 158, 159, 160, 161, 162, 163, 164, 165, 166, 167, 168, 169, 170, 171, 172, 173, 174, 175, 176, 177, 178, 179, 180, 181, 182, 183, 184, 185, 186, 187, 188, 189, 190, 191, 192, 193, 194, 195, 196, 197, 198, 199, 200, 201, 202, 203, 204, 205, 206, 207, 208, 209, 210, 211, 212, 213, 214, 215, 216, 217, 218, 219, 220, 221, 222, 223, 224, 225, 226, 227, 228, 229, 230, 231, 232, 233, 234, 235, 236, 237, 238, 239, 240, 241, 242, 243, 244, 245, 246, 247, 248, 249, 250, 251, 252, 253, 254, 255, 256, 257, 258, 259, 260, 261, 262, 263, 264, 265, 266, 267, 268, 269, 270, 271, 272, 273, 274, 275, 276, 277, 278, 279, 280, 281, 282, 283, 284, 285, 286, 287, 288, 289, 290, 291, 292, 293, 294, 295, 296, 297, 298, 299, 300, 301, 302, 303, 304, 305, 306, 307, 308, 309, 310, 311, 312, 313, 314, 315, 316, 317, 318, 319, 320, 321, 322, 323, 324, 325, 326, 327, 328, 329, 330, 331, 332, 333, 334, 335, 336, 337, 338, 339, 340, 341, 342, 343, 344, 345, 346, 347, 348, 349, 350, 351, 352, 353, 354, 355, 356, 357, 358, 359, 360, 361, 362, 363, 364, 365, 366, 367, 368, 369, 370, 371, 372, 373, 374, 375, 376, 377, 378, 379, 380, 381, 382, 383, 384, 385, 386, 387, 388, 389, 390, 391, 392, 393, 394, 395, 396, 397, 398, 399, 400, 401, 402, 403, 404, 405, 406, 407, 408, 409, 410, 411, 412, 413, 414, 415, 416, 417, 418, 419, 420, 421, 422, 423, 424, 425, 426, 427, 428, 429, 430, 431, 432, 433, 434, 435, 436, 437, 438, 439, 440, 441, 442, 443, 444, 445, 446, 447, 448, 449, 450, 451, 452, 453, 454, 455, 456, 457, 458, 459, 460, 461, 462, 463, 464, 465, 466, 467, 468, 469, 470, 471, 472, 473, 474, 475, 476, 477, 478, 479, 480, 481, 482, 483, 484, 485, 486, 487, 488, 489, 490, 491, 492, 493, 494, 495, 496, 497, 498, 499, 500, 501, 502, 503, 504, 505, 506, 507, 508, 509, 510, 511, 512, 513, 514, 515, 516, 517, 518, 519, 520, 521, 522, 523, 524, 525, 526, 527, 528, 529, 530, 531, 532, 533, 534, 535, 536, 537, 538, 539, 540, 541, 542, 543, 544, 545, 546, 547, 548, 549, 550, 551, 552, 553, 554, 555, 556, 557, 558, 559, 560, 561, 562, 563, 564, 565, 566, 567, 568, 569, 570, 571, 572, 573, 574, 575, 576, 577, 578, 579, 580, 581, 582, 583, 584, 585, 586, 587, 588, 589, 590, 591, 592, 593, 594, 595, 596, 597, 598, 599, 600, 601, 602, 603, 604, 605, 606, 607, 608, 609, 610, 611, 612, 613, 614, 615, 616, 617, 618, 619, 620, 621, 622, 623, 624, 625, 626, 627, 628, 629, 630, 631, 632, 633, 634, 635, 636, 637, 638, 639, 640, 641, 642, 643, 644, 645, 646, 647, 648, 649, 650, 651, 652, 653, 654, 655, 656, 657, 658, 659, 660, 661, 662, 663, 664, 665, 666, 667, 668, 669, 670, 671, 672, 673, 674, 675, 676, 677, 678, 679, 680, 681, 682, 683, 684, 685, 686, 687, 688, 689, 690, 691, 692, 693, 694, 695, 696, 697, 698, 699, 700, 701, 702, 703, 704, 705, 706, 707, 708, 709, 710, 711, 712, 713, 714, 715, 716, 717, 718, 719, 720, 721, 722, 723, 724, 725, 726, 727, 728, 729, 730, 731, 732, 733, 734, 735, 736, 737, 738, 739, 740, 741, 742, 743, 744, 745, 746, 747, 748, 749, 750, 751, 752, 753, 754, 755, 756, 757, 758, 759, 760, 761, 762, 763, 764, 765, 766, 767, 768, 769, 770, 771, 772, 773, 774, 775, 776, 777, 778, 779, 780, 781, 782, 783, 784, 785, 786, 787, 788, 789, 790, 791, 792, 793, 794, 795, 796, 797, 798, 799, 800, 801, 802, 803, 804, 805, 806, 807, 808, 809, 810, 811, 812, 813, 814, 815, 816, 817, 818, 819, 820, 821, 822, 823, 824, 825, 826, 827, 828, 829, 830, 831, 832, 833, 834, 835, 836, 837, 838, 839, 840, 841, 842, 843, 844, 845, 846, 847, 848, 849, 850, 851, 852, 853, 854, 855, 856, 857, 858, 859, 860, 861, 862, 863, 864, 865, 866, 867, 868, 869, 870, 871, 872, 873, 874, 875, 876, 877, 878, 879, 880, 881, 882, 883, 884, 885, 886, 887, 888, 889, 890, 891, 892, 893, 894, 895, 896, 897, 898, 899, 900, 901, 902, 903, 904, 905, 906, 907, 908, 909, 910, 911, 912, 913, 914, 915, 916, 917, 918, 919, 920, 921, 922, 923, 924, 925, 926, 927, 928, 929, 930, 931, 932, 933, 934, 935, 936, 937, 938, 939, 940, 941, 942, 943, 944, 945, 946, 947, 948, 949, 950, 951, 952, 953, 954, 955, 956, 957, 958, 959, 960, 961, 962, 963, 964, 965, 966, 967, 968, 969, 970, 971, 972, 973, 974, 975, 976, 977, 978, 979, 980, 981, 982, 983, 984, 985, 986, 987, 988, 989, 990, 991, 992, 993, 994, 995, 996, 997, 998, 999, 1000</small>					
ORIGINAL SIZE	TITLE		DATE		AI
	REL 3T Electric Winch		15.03.2023		SP1
					OP 1